

Unomedical Pty Ltd
11-17 Wilmette Place,
Mona Vale, NSW, Australia 2103
T (02) 9997 8033
F (02) 9999 4031

New Zealand
Customer Service: 0800 161 777
Product Support: 0800 445 400
www.unomedical.com

Electrosurgical Grounding Plates

Local response, global expertise

Unomedical leadership

With critical emphasis on patient safety our foremost objective, Unomedical has applied our worldwide expertise to the design and performance capabilities of the Neutralect-Mini Electrosurgical products.

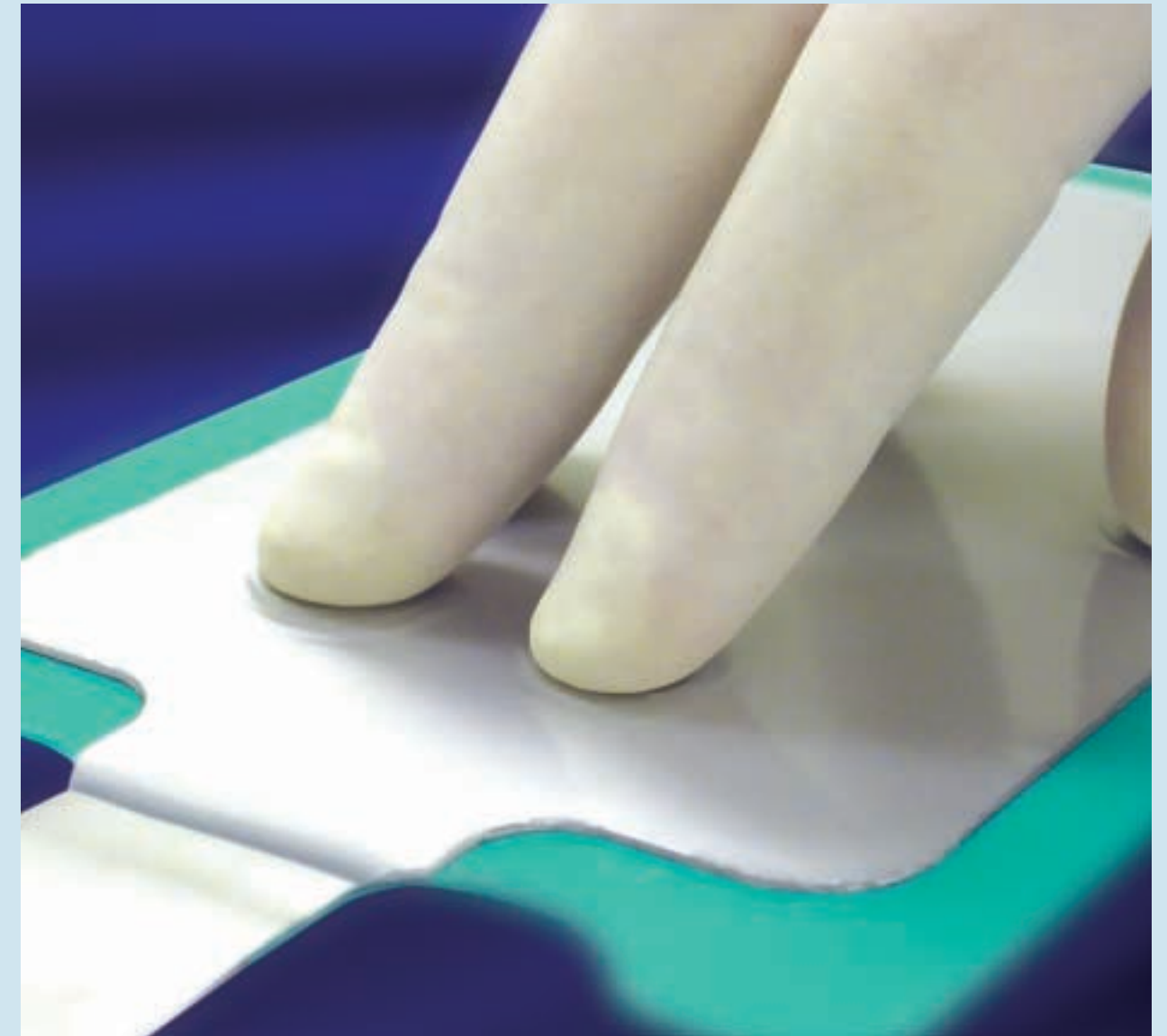
Electrosurgical Products

- Neutralect-Mini Split
- Neutralect-Mini Standard
- Neutralect Cables



Neutralect-Mini

Electrosurgical Products



No two patients are the same. Some patients may be elderly with fragile skin, while other patients may be in their childhood or early adult life with healthy 'normal' skin. But when performing an electrosurgical operation, the electrosurgical plate will not differentiate between these two skin types irrespective of patient's age or size. The quality of care, however, must remain the same.

Here at Unomedical we understand that our electrosurgical plates will come into contact with a diverse range of skin types. We also recognise that a paediatric patient is different in so many ways from an adult patient, which is why we have developed a plate which accommodates all ages and sizes, and all skin types.

(1)ANSI/AAMI - HF18:2001, Clause 4.2.3 to 4.2.4

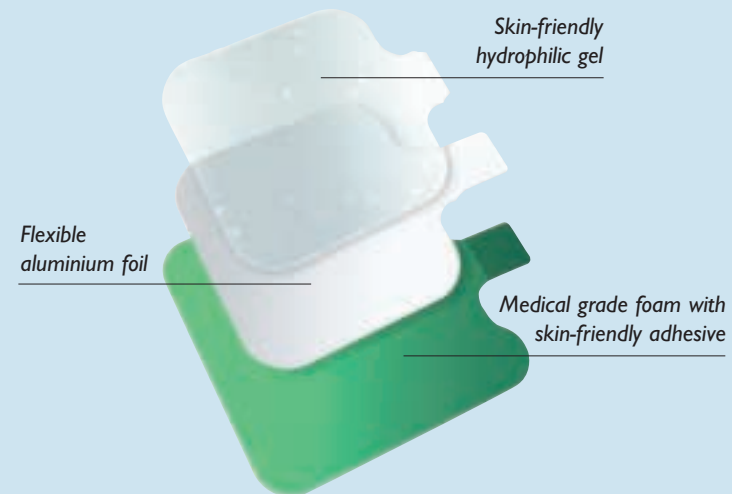
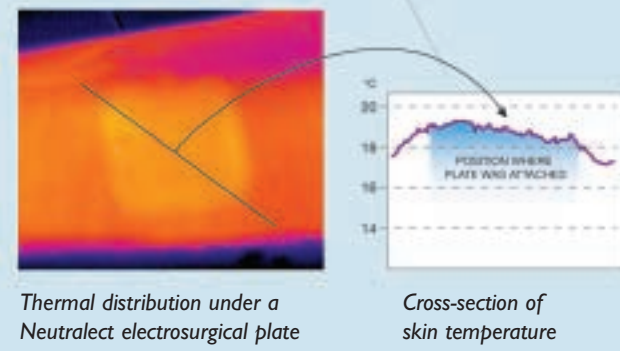
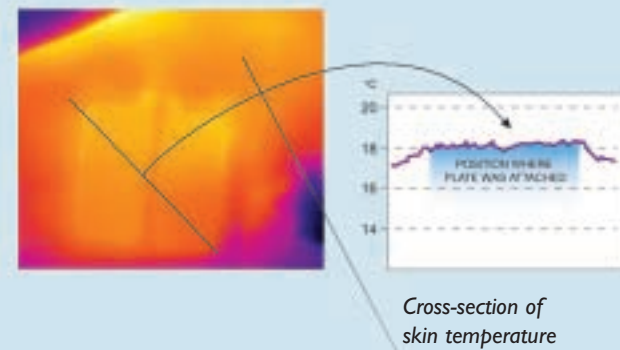
Neutralect-Mini

Electrosurgical Products

Patient Safety

It is important that the electrosurgical plate is not only comfortable for the patient, it also needs to be safe to use.

Equally, the materials used to create the plate do not harm the patient. Because of this, an established protocol is used to test the safety of Unomedical electrosurgical plates.



Outstanding Gel

We have applied our knowledge in choosing the correct materials to create our range of electrosurgical plates. Our unique conducting gel will adhere to any skin type and also to those difficult areas of the body. Contact between the electrosurgical plate and patient is maximised as the gel conforms to the skin's natural crevices.

The effect is a more even distribution of electrosurgical currents across the plate without any damaging thermal hotspots. Due to the added softness of the conducting gel our electrosurgical plates can be easily removed from the patient's skin after the surgical procedure without causing skin trauma.

Skin-friendly Foam

Similarly, the polyethylene foam backing material used is selected on years of experience. Foam, naturally, is waterproof. No fluids can therefore penetrate through to the hydrophilic gel, which otherwise would absorb the fluid resulting in a loss of gel adhesion. Also, the foam will

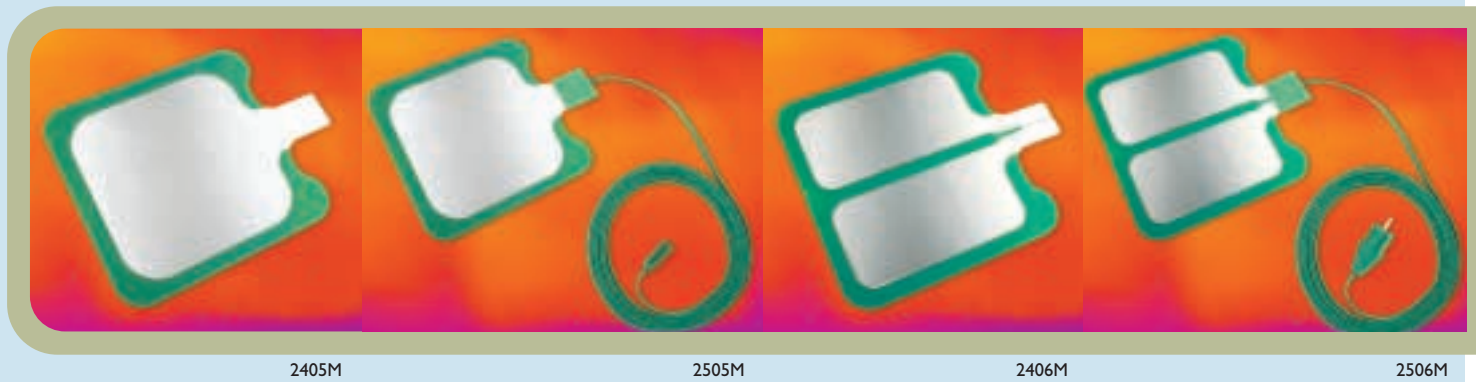
insulate electrosurgical currents from the operating staff during the procedure. No need to worry about spurious electrical currents! And because skin-friendly adhesives are used on the foam, additional adhesion to the electrosurgery plate is provided without the worry of potential skin irritations.

Storage space-saving Electrosurgical Plates

Traditionally, dealing with adults, or children, required the stock room of any hospital OR to have two electrosurgical plates; one for adults and one for children.

To combat this dual problem of storage space and patient diversity, Neutralect-Mini has been optimised in size to accommodate both adult and children patients.

Red Tab = Split Green Tab = Standard



REF.	Description	Quantity per pouch	Quantity per inner box
2405M	Standard Plate	10	50
2505M	Standard Plate with cable	1	50
2406M	Split Plate	10	50
2506M	Split Plate with cable	1	50

Neutralect

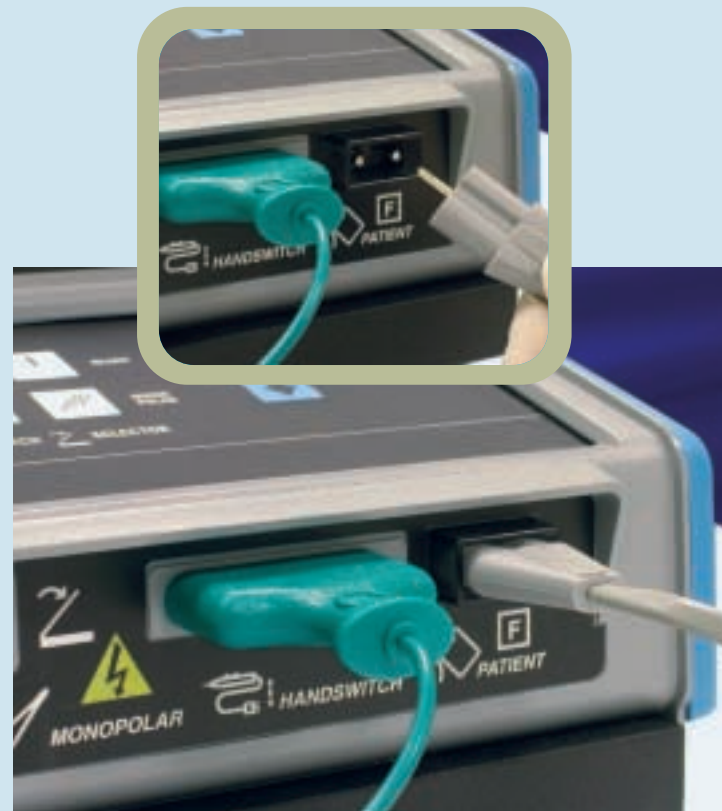
Cables

Precision Engineered Cables

For operating rooms that prefer re-usable electro-surgical cables it is vitally important that connection to the electro-surgical generator is secure and safe. Equally important is the connection to the electro-surgical plate. Any failure in both of these connections will result in generator alarms and the potential disruption to the sterile field. To prevent these events from occurring we have created a range of precision engineered electro-surgical cables.

Take, for example, the connection to the grounding plate. Our cables have a special 'four-teeth' feature which actually 'bites' the electro-surgical plate. Detachment from the plate is eliminated even when a pull force is applied. Similarly for the attachment to the generator, the connection is tight and safe. No disruptive and stressful alarms will sound during the procedure. To facilitate 'correct cable for the correct electro-surgical plate', colour coded tab ends are attached to the electro-surgical plate for easy identification between split and standard plates.

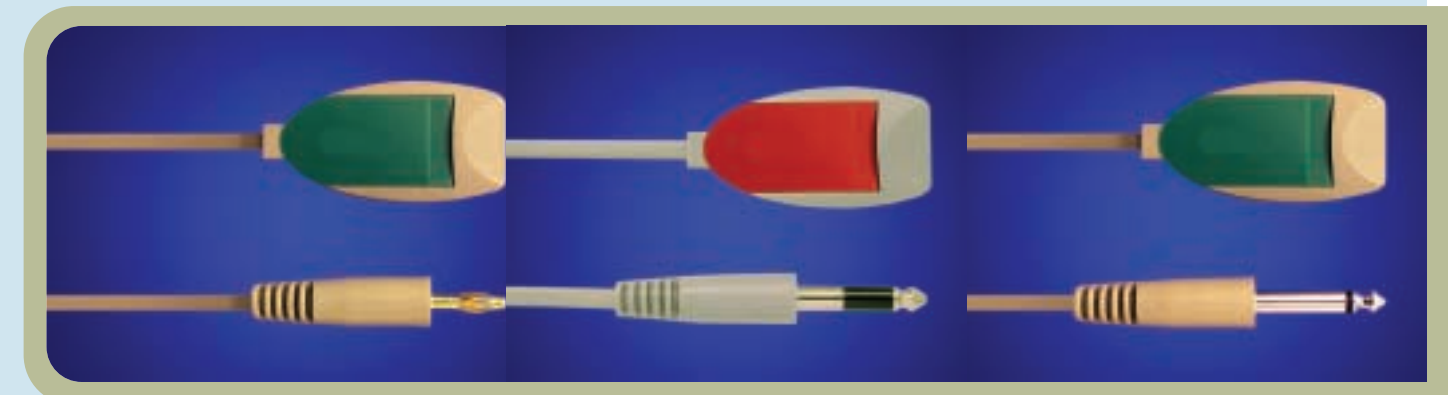
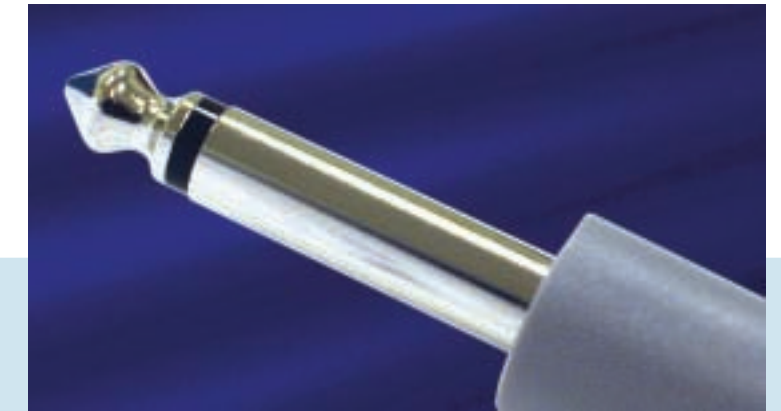
At Unomedical we believe our range of Neutralect electro-surgical plates and cables are quite unique. Designed with patient comfort, safety and packaged with end-user convenience in mind, Neutralect electro-surgical products are for people who care.



Precision engineered connectors ensure a tight and safe cable connection to the electro-surgical generator.



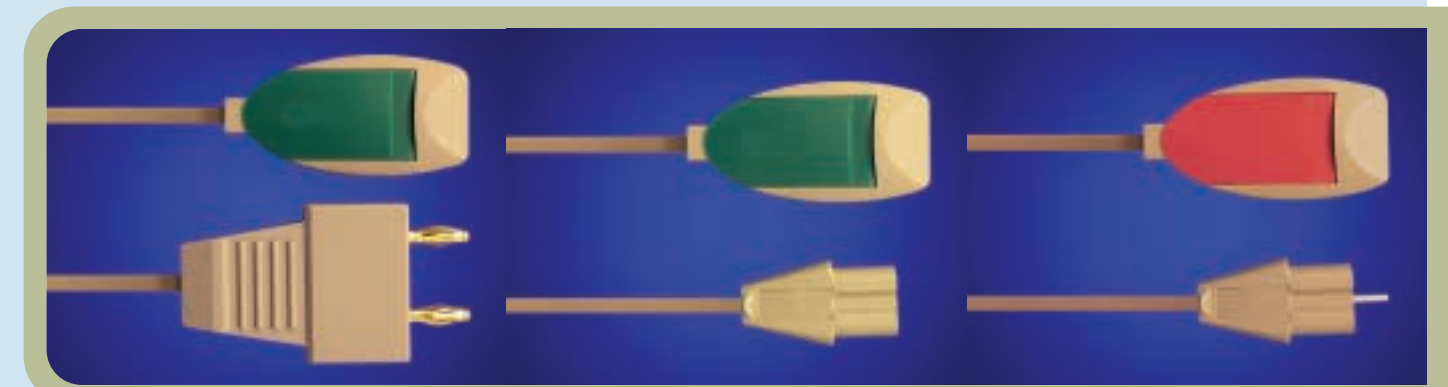
With a wide mouth connection and a 'four teeth' feature, Neutralect electro-surgical cables are easy to use while providing secure attachment.



3401M

3404M

3405M



3406M

3407M

3508M

REF.	Description	Quantity per Box
3401M	Diathermy Cable 4mm Jack	1 pc
3404M	Diathermy Cable Erbe 6.3mm Jack REM	1 pc
3404/5/M	Diathermy Cable Erbe 6.3mm Jack REM, 5 Metres	1 pc
3405M	Diathermy Cable Erbe 6.35mm Jack	1 pc
3405/5/M	Diathermy Cable Erbe 6.35mm Jack, 5 Metres	1 pc
3406M	Diathermy Cable Twin Pin	1 pc
3406M/5/M	Diathermy Cable Twin Pin, 5 Metres	1 pc
3407M	Diathermy Cable Valleylab Non REM	1 pc
3508M	Diathermy Cable Valleylab REM	1 pc